

FEATURE

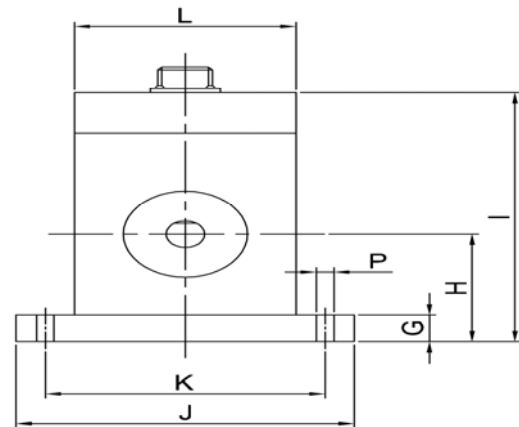
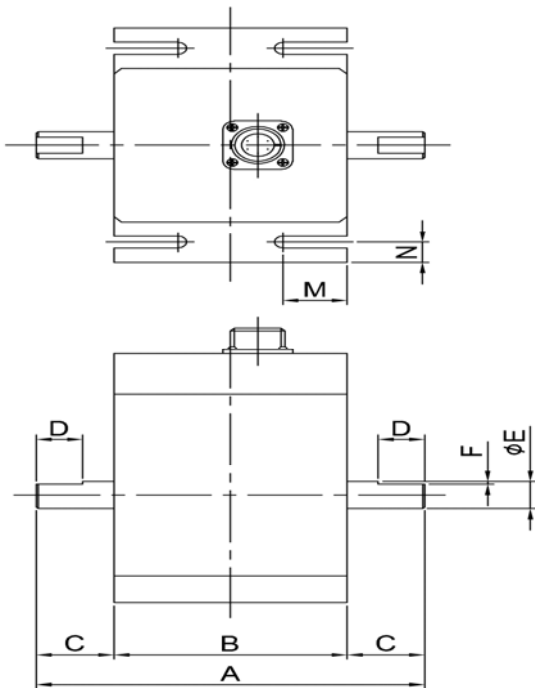
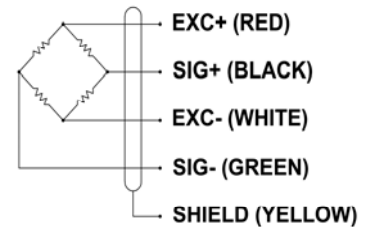
- . 샤프트 타입의 회전형 소형 접촉식 토크센서
- . 회전하는 기기의 정적, 동적 토크측정
- . 컴팩트한 디자인으로 미세 토크측정
- . 모터 부하테스트, 볼트 체결력, 스프링, 힌지 등 토크측정

SPECIFICATION

MODEL	TCS
Rated capacity (R.C.)	5, 10, 20, 50, 100, 200, 500, 1000 kgf·cm
Rated output (R.O.)	1.5 ± 0.4mV/V (5,10KC : 1.0±0.2mV/V)
Non-linearity	≤ 0.3% R.O.
Hysteresis	≤ 0.3% R.O.
Non-repeatability	≤ 0.3% R.O.
Terminal resistance, input	350Ω ± 1%
Terminal resistance, output	350Ω ± 1%
Insulation resistance	> 1000MΩ @30V DC
Temp. effect on rated output	≤ 0.1% LOAD/10°C
Temp. effect on zero balance	≤ 0.1% R.O./10°C
Temp. range compensated	-10 to 60°C
Excitation Voltage	5V,10V DC
Safe overload	150% R.C.
Cable	φ4 shield 3m



WIRING INFORMATION



DIMENSION (mm)

Rated Capacity	A	B	C	D	φE	F	G	H	I	J	K	L	M	N	P
5, 10kgf·cm	96	60	18	12	8	1	10	40	92.5	87	72	57	16.5	7.5	4.5
20, 50 kgf·cm	100	60	20	12	10	1	10	40	92.5	87	72	57	16.5	7.5	4.5
100, 200kgf·cm	120	76	22	15	18	5x5	10	40	92.5	87	72	57	20	7.5	4.5
500, 1000kgf·cm	146	76	35	20	20	6x6	10	40	92.5	97	82	67	20	7.5	5.5