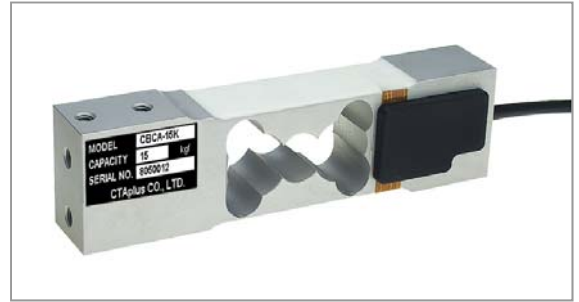


FEATURE

- . 저가형 싱글 포인트 로드셀
- . 편심 하중보장
- . 방진, 방수등급 : IP65

SPECIFICATION

MODEL	CBCA
Rated capacity (R.C.)	5, 10, 15, 20, 30, 50, 75, 100 kgf
Rated output (R.O.)	2.0 ± 0.2 mV/V
Zero balance	0 ± 0.1 mV/V
Combined error	0.03% R.O.
Repeatability	0.01% R.O.
Creep for 30 min	0.03% R.O.
Temp. effect on zero value	0.03% / 10°C
Temp. effect on output value	0.03% / 10°C
Excitation recommended	10V DC
Excitation maximum	15V DC
Terminal resistance, input	400 ± 20Ω
Terminal resistance, output	350 ± 3.5Ω
Insulation resistance	> 2000MΩ @ 50V DC
Compensated temperature range	-10 to +40°C
Operating temperature range	-20 to +80°C



- Mounting
Socket-head cap screw M6 x 1.0(10.9)
Tightening torque : 14Nm
- Maximum Platform Size
400 x 400mm
- Material
Anodized Aluminum
- Cable
Braided shield 4-wire round cable
with PVC-jacket

DIMENSION (mm)

